

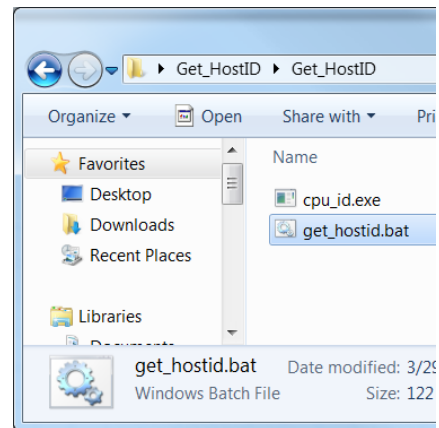
Creo 1.0 – Schools Edition – Things to do before you install

1. Create a PTC Academic account:

- www.ptc.com/appserver/common/account/ptcacademic.jsp

2. Get your computer's Host ID:

- apps.ptc.com/schools/Get_HostID.zip.
The Host ID is required to generate a license file for your computer.
- Unzip the file and from the Get_HostID folder, double-click **get_hostid**.
- Record your **PTC HOSTID**



3. Download the **Creo 1.0** DVD image:

- www.ptc.com/appserver/auth/it/esd/academicFree.jsp
 - If necessary, login using your PTC username (your email address) and password.
 - Accept the Export Agreement and then click **Continue**.
 - To the right of **Win 32-64 DVD (4171 MB)**, click **Download Manager** to begin the download. *The HTTP link will also work but may be slower.*

Generate your license file

1. Open the license generation page: www.ptc.com/go/license4creoschools.

If you click the link and see a "NULL" error, copy and paste the address into your web browser.

- If necessary, login using your PTC username (your email address) and password.
- Enter your **Product Code: BK380201EDSCHOOLSEDITN**
- Enter your **Host ID**.
- Enter any other required information.
- Click **Submit Request**.

Your license file will be emailed to you within two hours.

2. Save your license file to a save location on your computer:

- *In this document we will save it in C:\ProgramData\PTC\Licensing.*



You may or may not have access to this folder. Another suggested location is a "licensing" folder you create in your Documents folder.

If this license file is ever deleted, Creo will no longer run.


Unzip the DVD and install Creo 1.0

1. **Unzip** the downloaded DVD image (MED-100WIN-CD-380_M###_Win32-64.zip):

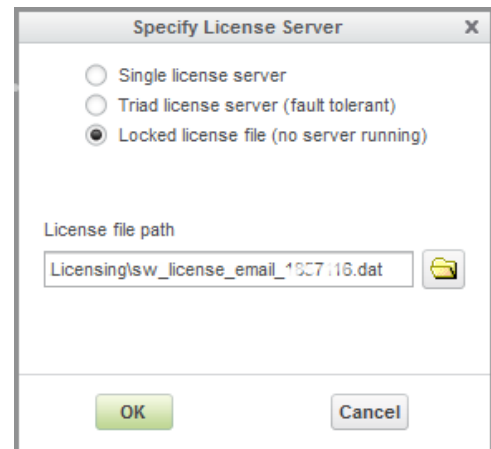
represents the build code of Creo you downloaded. The actual number will vary as additional Creo builds are released.

- Right-click the downloaded  zip file, select **Extract All** and then select a location the DVD will be unzipped to. *Select a location you can easily access, such as your Desktop.*
- Use Windows Explorer to open the resulting **MED-100WIN-CD-380_M###_Win32-64** folder. *This folder can be copied to a shared drive, DVD or thumb drive and then be used to install the software on other computers.*
- Temporarily disable all firewall, anti-virus and anti-spyware applications.
- Run **setup.exe**.
 - When installing on Windows 7, right-click **setup.exe** and select  **Run as administrator** from the pop-up menu.

2. From the PTC Setup – Creo 1.0 (M###) dialog box:

- Click **Next**.
- Accept the license agreement and click **Next**.
- Select the application you want to install; **Creo Parametric** or **Creo Direct**.
- Click **Next**.
- Click **Add**.
- From the Specify License Server dialog box:
 - Enable **Locked license file (no server running)**.
 - Click **Open**  and browse to and double-click the license file you previously saved.
 - Click **OK**.
- Click **Next**.
- Set your **Windows Shortcut Preferences**.
- Click **Next**.

*Do not disable **Quality Agent Reporting**; it is required for the free Student edition of Creo.*
- Click **Install**.
- After the install is complete, click **Next**.



You are now ready to use Creo 1.0 - Schools Edition

We recommend that you now use Creo Standards to select your default unit system and drawing standard apps.ptc.com/schools/creo_standards_1.pdf.

For additional resources, please visit www.ptc.com/go/academicprogram. If you need technical support please visit one of the following:

- **Support Forum:** communities.ptc.com/community/academic-program/support
- **Support Request:** www.ptc.com/go/academic-request